

IMPORTANT SAFETY AND INSTALLATION INSTRUCTIONS

WARNING: Risk of fire and electrical shock. This product is to be installed by a qualified electrician only.

CAUTION: When using electrical equipment, basic safety precautions should always be followed including the following: Read all instructions carefully before installation and save

for future use. Make sure installation and all connections are in accordance with National Electrical Code and any local regulations. To avoid possible electrical shock, be sure that power supply is turned off before installing or servicing this fixture. Servicing should be performed by qualified service personnel.

These instructions do not claim to cover all details or variations. When additional information is desired, please contact your SPI representative.

MULTI TIERED PENDANT

Page 1

1. INSTALL CEILING MOUNTING PLATE AND CANOPY MOUNT BRACKETS (SEE DETAIL ONE Page 2)
2. INSTALL TRANSITION HUBS (SEE DETAIL TWO Page 3)
3. POSITION FIRST 24" FIXTURE AND INSERT (3) CABLES FROM MOUNTING PLATE INTO CABLE GRIPPERS ON FIXTURES.
****RINGS ARE TO BE SPACED 24" BETWEEN THE TOP AND BOTTOM OF EACH CORRESPONDING RING.**
TRIM CABLES AFTER FINAL POSITION.
4. REPEAT STEP 3 FOR ALL FIXTURES.
5. PASS POWER CORDS THRU TRANSITION HUBS AND MAKE ELECTRICAL CONNECTIONS IN CANOPY ACCORDING TO ALL CODES.

NOTE:

****FIXTURE MAY VARY IN APPEARANCE**

****CABLE LENGTH ARE FOR STANDARD OAH ONLY**

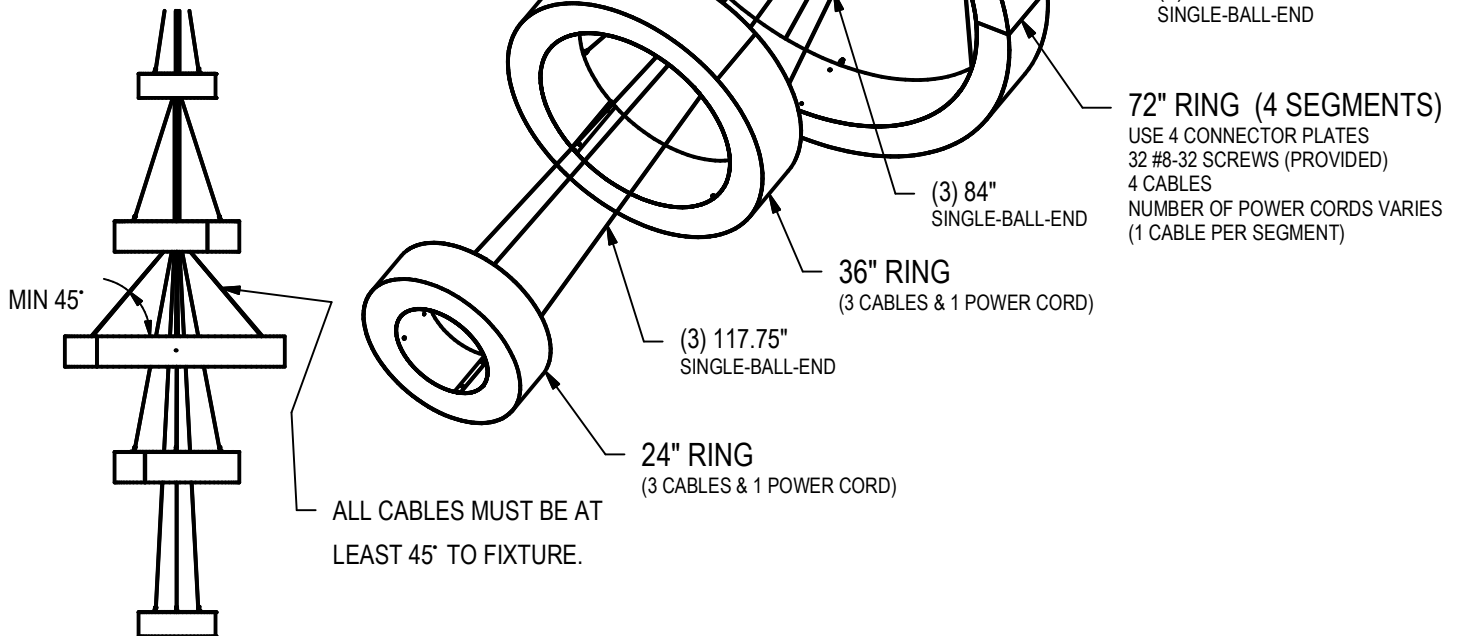


FIGURE 1

09/23/2022

IS96138X

IMPORTANT SAFETY AND INSTALLATION INSTRUCTIONS

WARNING: Risk of fire and electrical shock. This product is to be installed by a qualified electrician only.

CAUTION: When using electrical equipment, basic safety precautions should always be followed including the following: Read all instructions carefully before installation and save

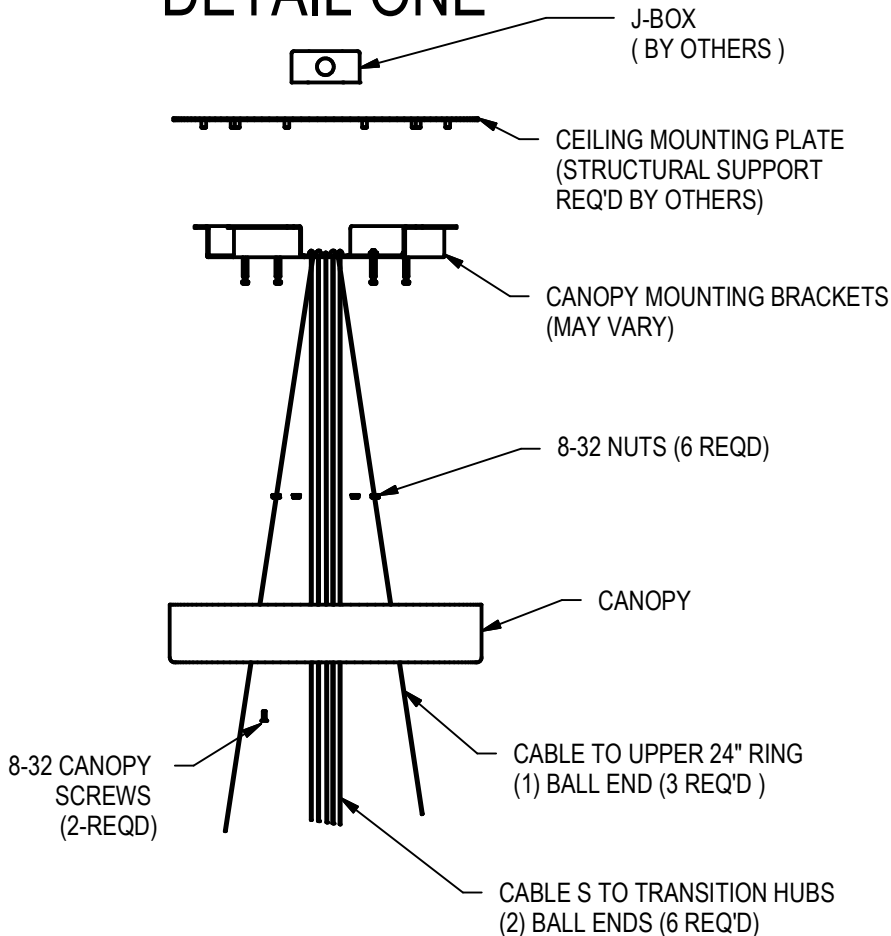
for future use. Make sure installation and all connections are in accordance with National Electrical Code and any local regulations. To avoid possible electrical shock, be sure that power supply is turned off before installing or servicing this fixture. Servicing should be performed by qualified service personnel.

These instructions do not claim to cover all details or variations. When additional information is desired, please contact your SPI representative.

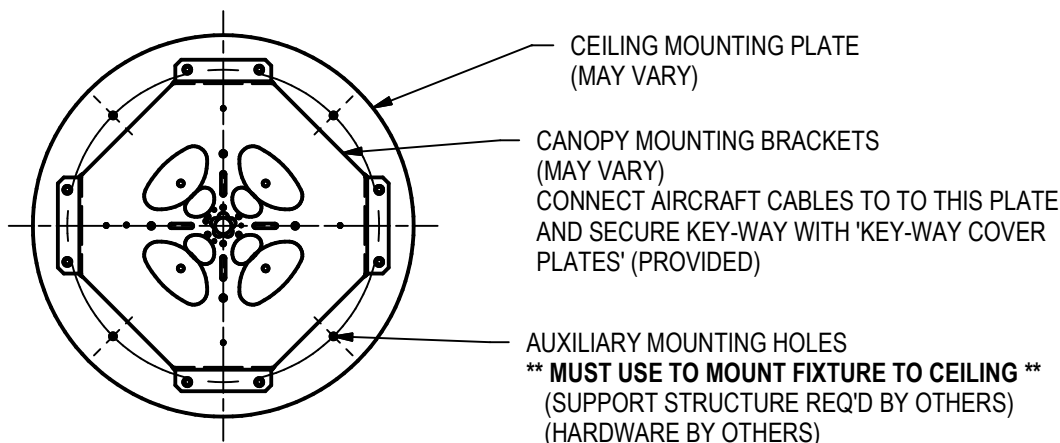
MULTI TIERED PENDANT

Page 2

DETAIL ONE



1. POSITION CEILING MOUNTING PLATE OVER OCTAGONAL J-BOX AND SECURE TO CEILING STRUCTURE (HARDWARE BY OTHERS). (ADDITIONAL STRUCTURAL SUPPORT REQ'D.)
2. INSERT (3) CABLES THRU THE (3) HOLES IN FIXTURE MOUNTING BRACKET. FOR THE UPPER 24" RING AND FEED THROUGH THE CORRESPONDING (3) HOLES IN THE CANOPY.
3. INSERT SMALL BALL END OF (6) CABLES THRU (6) HOLES IN THE CANOPY HANGER BRACKET FOR THE TRANSITION HUBS.
4. INSTALL CANOPY MOUNTING PLATE TO HANGER BRACKET PLATE AND SECURE WITH (6) 8-32 NUTS PROVIDED.
5. ATTACH CANOPY WITH (2) PAINTED 8-32 SCREWS PROVIDED. (CANOPY WILL BE LOWERED AT A LATER POINT TO CONNECT POWER).



09/23/2022
IS96138X

IMPORTANT SAFETY AND INSTALLATION INSTRUCTIONS

WARNING: Risk of fire and electrical shock. This product is to be installed by a qualified electrician only.

CAUTION: When using electrical equipment, basic safety precautions should always be followed including the following: Read all instructions carefully before installation and save

for future use. Make sure installation and all connections are in accordance with National Electrical Code and any local regulations. To avoid possible electrical shock, be sure that power supply is turned off before installing or servicing this fixture. Servicing should be performed by qualified service personnel.

These instructions do not claim to cover all details or variations. When additional information is desired, please contact your SPI representative.

MULTI TIERED PENDANT

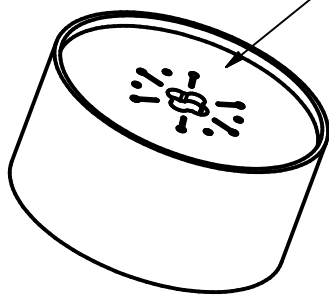
Page 3

DETAIL TWO

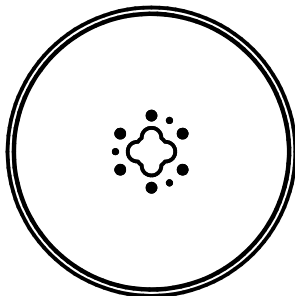
10-32 SCREW
(4 REQ'D)

CABLE RETAINER
(2 REQ'D)

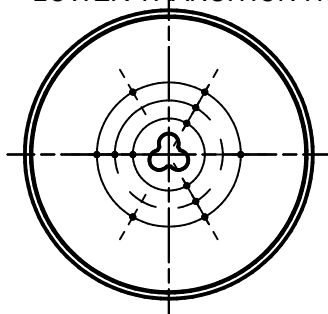
TRANSITION HUB TOP



UPPER TRANSITION HUB



LOWER TRANSITION HUB



1. REMOVE CABLE RETAINERS FROM EACH OF THE TRANSITION HUBS.
2. CONNECT (6) 2-BALL-END CABLES (**26.50"** LG) FROM THE UPPER TRANSITION HUB THRU THE TO THE CENTER HOLE IN THE CANOPY AND CONNECT TO THE CORRESPONDING (6) HOLES IN THE CANOPY HANGER BRACKET. (WILL NEED TO REMOVE CABLE RETAINERS ON THE CANOPY BRACKET AND MUST REINSTALL BEFORE HANGING.)
3. CONNECT (6) 2-BALL-END CABLES (**33.0"** LG) FROM THE BOTTOM SIDE OF THE UPPER TRANSITION HUB TO THE CORRESPONDING (6) HOLES ON THE TOP SIDE IN THE LOWER TRANSITION HUB. (WILL NEED TO REMOVE CABLE RETAINERS ON BOTH HUBS AND MUST REINSTALL BEFORE HANGING.)
4. BE SURE TO POSITION BOTH HUBS, AND CANOPY HANGER BRACKET WITH CABLES IN CORRESPONDING ROTATIONAL ALIGNMENT.
5. UPPER 24" RING WILL MOUNT TO CANOPY USING THREE (**37.50"** LG) SINGLE-BALL-END CABLES.
6. UPPER 36" RING WILL MOUNT TO BOTTOM SIDE OF UPPER TRANSITION HUB USING THREE (**48.00"** LG) SINGLE-BALL-END CABLES.
7. 72" RING WILL MOUNT TO BOTTOM SIDE OF LOWER TRANSITION HUB USING FOUR (**60.00"** LG) SINGLE-BALL-END CABLES.
8. LOWER 36" RING WILL MOUNT TO BOTTOM SIDE OF LOWER TRANSITION HUB USING THREE (**84.00"** LG) SINGLE-BALL-END CABLES. **USE THE OUTER 3-HOLE PATTERN ON THE HUB.**
9. LOWER 24" RING WILL MOUNT TO BOTTOM SIDE OF LOWER TRANSITION HUB USING THREE (**117.75"** LG) SINGLE-BALL-END CABLES. **USE THE INNER 3-HOLE PATTERN ON THE HUB.**

09/23/2022

IS96138X